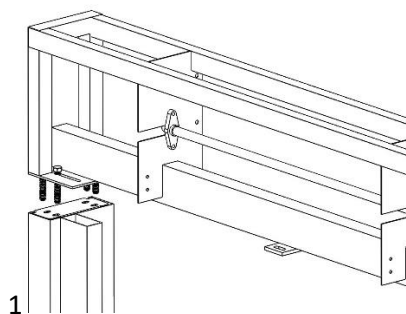
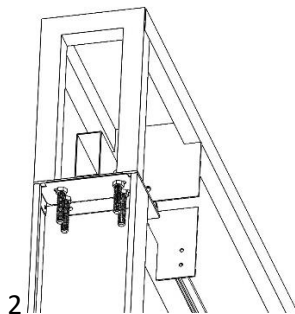


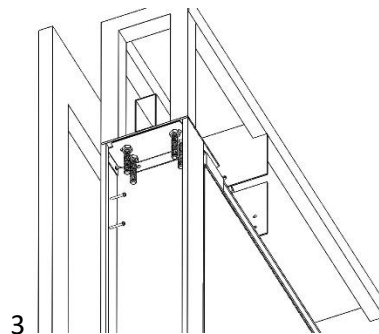
# ORSEZ MODEL 400 INDUSTRIAL DOOR MOUNTING INSTRUCTIONS



1

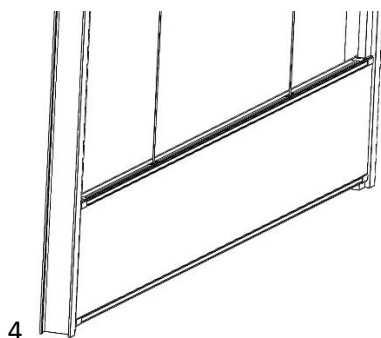


2

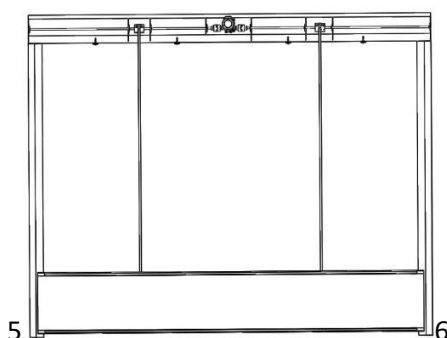


3

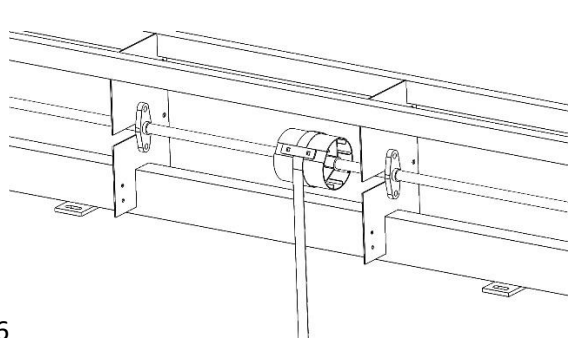
Complete the frame installation by joining the upper assembly and the uprights. Fix the mechanical assembly to the mounting surface.



4

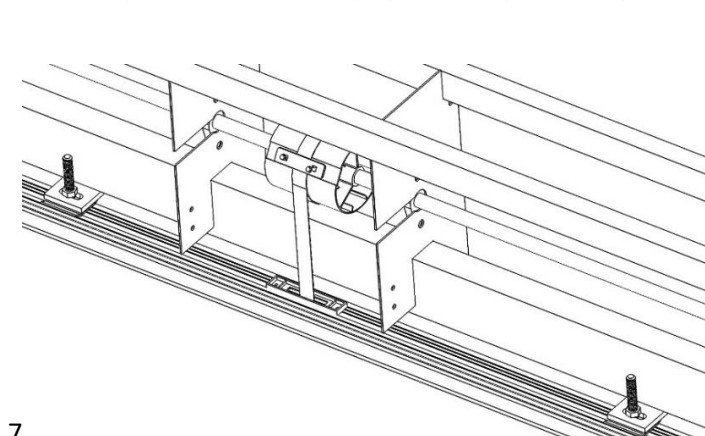


5

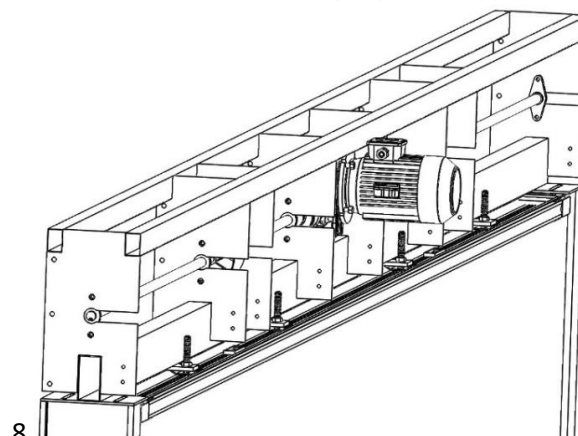


6

Put the tarpaulin between the uprights and lay it on the ground. Screw the tarpaulin suspension belts tightly to the upper drum.

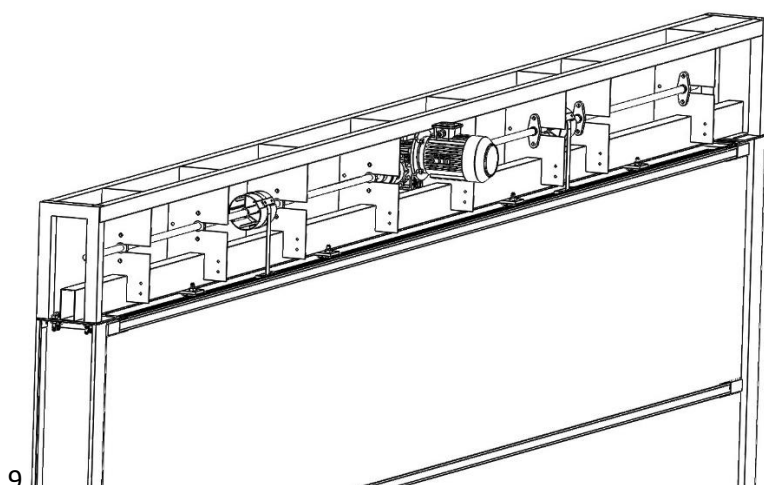


7

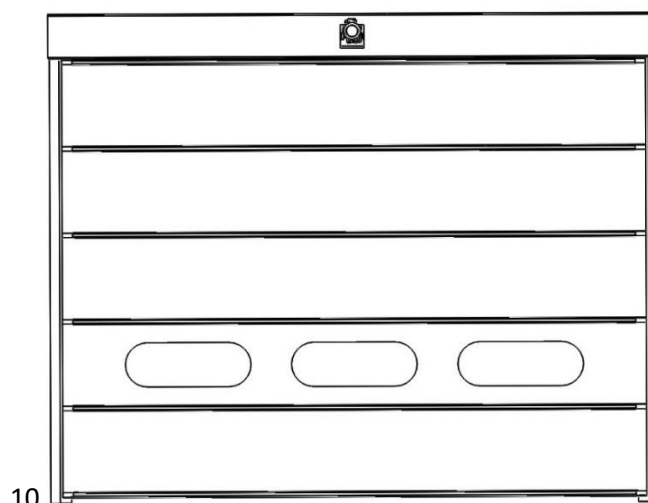


8

Roll the belts upwards by starting the engine in a controlled manner. Tighten the hanger screws and tighten the nuts.



9



10

Replace the top cover by adjusting the limit settings.

